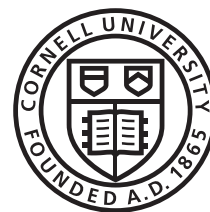


HERBERT F. JOHNSON

MUSEUM OF ART

Annual Report

2020–2021





“Print Media: Introduction to Print Media” (ART 2301) at the Museum, Spring 2021 (see page 15).

The Johnson Museum of Art greatly values the support of its donors. Every attempt was made here to produce a complete and accurate report.

In the event of an error or omission, please contact Mary Kate Katz, Assistant Director, Annual Giving, at mk2387@cornell.edu.

Thank you!

Cornell University is located on the traditional homelands of the Gayogohó:nq' (the Cayuga Nation). The Gayogohó:nq' are members of the Haudenosaunee Confederacy, an alliance of six sovereign nations with a historic and contemporary presence on this land. The confederacy precedes the establishment of Cornell University, New York state and the United States of America. We acknowledge the painful history of Gayogohó:nq' dispossession, and honor the ongoing connection of Gayogohó:nq' people, past and present, to these lands and waters.

This land acknowledgment has been reviewed and approved by the traditional Gayogohó:nq' leadership.

Contents

3	From the Director Museum Advisory Council
4	Selected acquisitions
12	Exhibitions and installations
14	University partnerships
18	Virtual program highlights
19	School and community partnerships
20	Interns
21	Student engagement and activities
22	Loans from the collection
23	Works conserved
24	Collections support
26	Foundation, government, and corporation support
27	Financial statements
29	Staff
30	Members and special gifts
35	The Cayuga Society
36	Named endowment funds
38	Credits

From the Director

The mission of the Johnson Museum is to bring art and people together—to collect, preserve, present, and interpret the full range of the world of art; to be a forum for ideas; and to increase knowledge through and about art.

In the first year of the global Covid-19 pandemic, we supported Cornell’s educational mission in safely teaching with objects from our global collection. Our spirit of provisionality—a kind of lablike disposition—needed to be in line with the university’s choice to close the campus to guests. But while the Museum was closed to the public and open to Cornell classes by appointment only, we used our spaces, collection, and technology for both in-person and online instruction and programming to reach our campus and community audiences. We were also able to take advantage of this time to thoughtfully renovate our iconic 1973 building, designed by I. M. Pei, to replace original roofing, replace and move some roof-drain piping to less sensitive locations, and add additional insulation to help reduce our carbon footprint.

Our first curricular teaching galleries supported classes across campus in a collaborative effort to support in-person teaching with works of art. We helped the campus de-densify by offering our galleries for in-person instruction, and hosted a rotating slate of student art installations. Museum educators worked across the region and even out of state to bring pre-K–12 programs to thirty schools. From webinars to virtual drawing workshops, we found new ways to bring the Museum home.

But two exhibitions in our ongoing video projection series on the Museum’s east facade, by artists Christian Marclay and Paul Pfeiffer, may have held the most special resonance this year, as we all sought ways to connect with each other and the spirit of creativity in such challenging times.

Jessica Levin Martinez
Richard J. Schwartz Director

Museum Advisory Council

Executive committee

Gary Davis, *chair*
Susan Lynch, *vice chair/development chair*

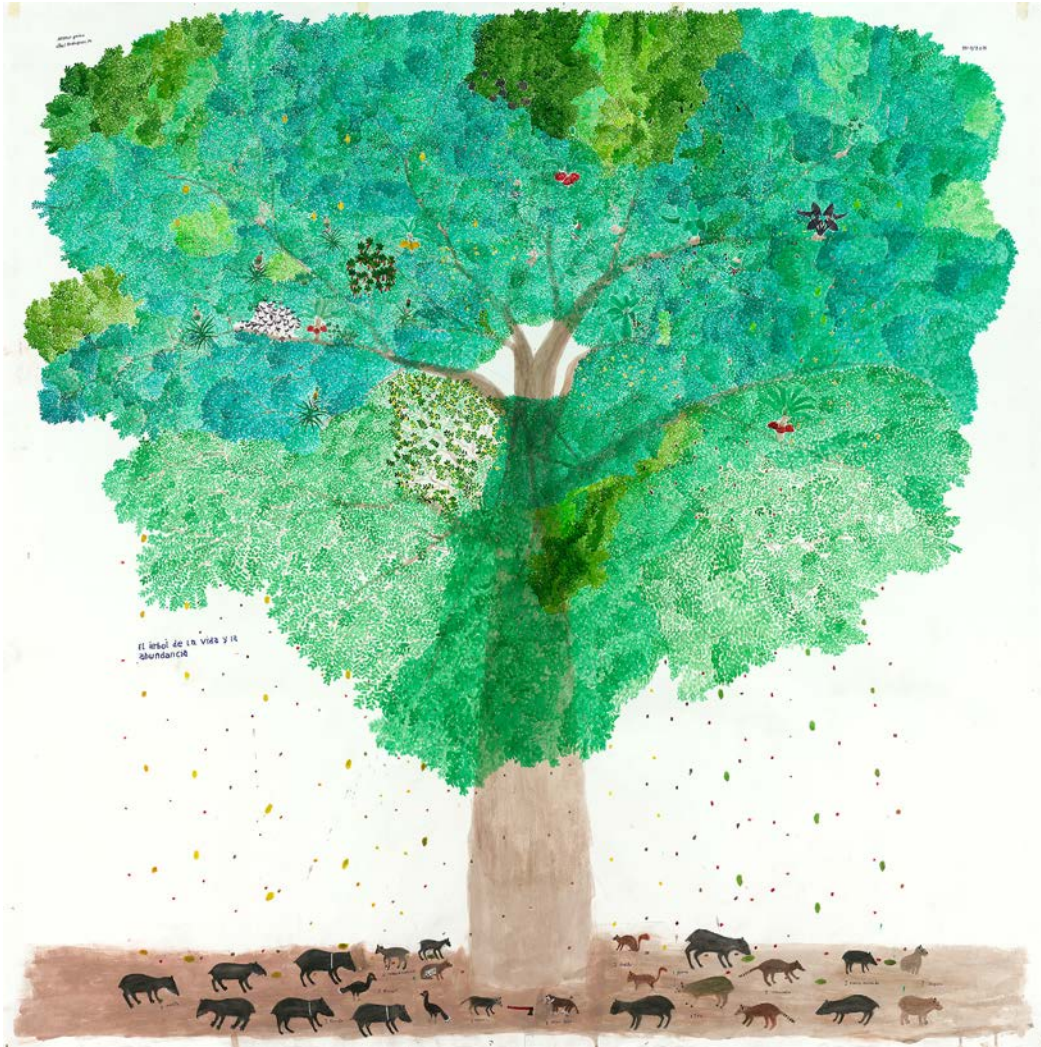
Rona Hollander Citrin, *nominations chair*
Moira Hearne Hints, *communications chair*
Joel Mallin, *finance chair*
Judith Stoikov, *collections chair*
Beth Treadway, *education chair*

Members

Ellen Adelson	James Siena
Lisa Baker	Elliott Siff †
Katie Bartels	Marlene Siff
Madeleine Bennett	Betty Ann Besch Solinger
Janet Bishop	C. Evan Stewart
Deborah Goodman Davis	Genevieve Tucker
Merry Foresta	Andrea Gottlieb Vizcarrondo
Andy Grundberg	
Alan B. Harris	<i>Emeritus Members</i>
Elizabeth H. Harris	Ira and Gale Drukier
Alex Ho	Kenneth and Jill Iscol
Michael Jacobs	Dorothy Litwin
Younghee Kim-Wait	Patricia Carry Stewart
R. Alexander Latella	Harold Tanner
Jeffrey Libshutz	
Sherry Mallin	
Nancy Meinig	
Evalyn Edwards Milman	
Donald C. Opatrny	
Judith T. Opatrny	
Melissa Russell Rubel	
Nancy Schaenen	
Nelson Schaenen, Jr.	

† *deceased*

Selected acquisitions



Abel Rodríguez

Nonuya, born 1941 in Cahuinari region, Colombia

El árbol de la vida y la abundancia
(*The Tree of Life and Abundance*), 2019

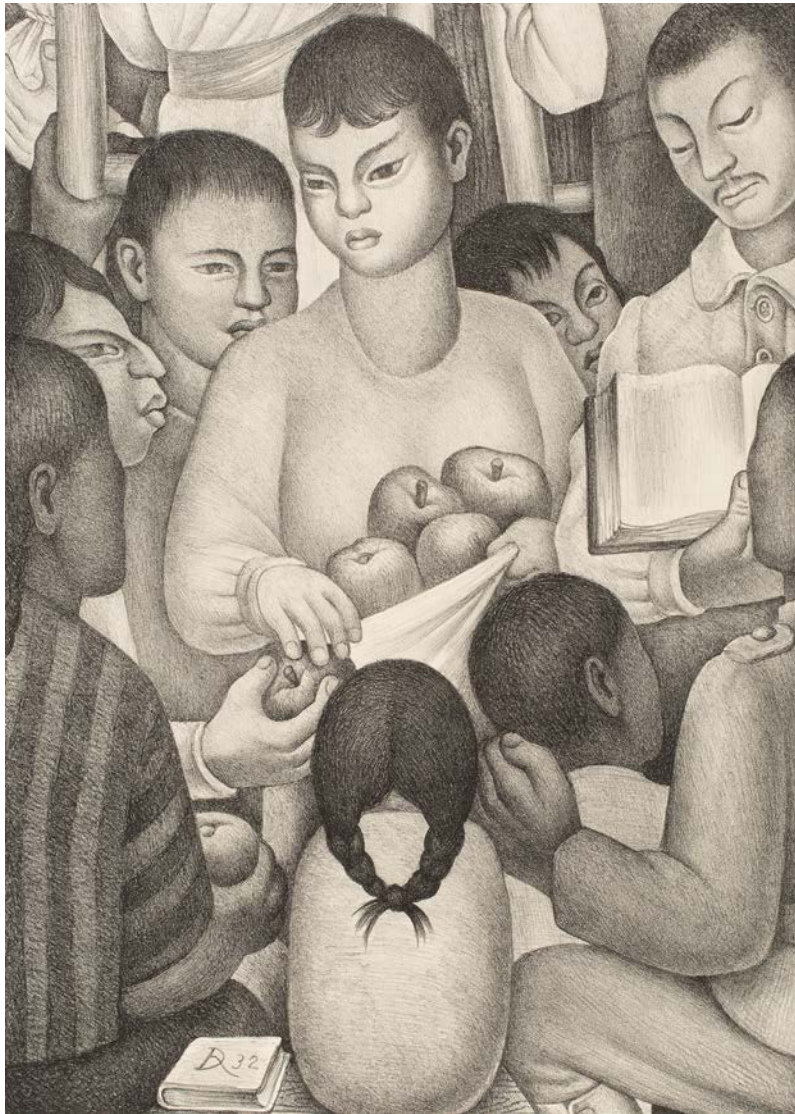
Watercolor on Fabriano paper

59 3/16 × 59 1/4 inches (150.3 × 150.5 cm)

Acquired through the Warner L. Overton, Class of 1922,
Endowment, and through the David M. Solinger, Class of 1926,
Endowment, with additional support from Malcolm Whyte,
Class of 1955, and Karen Whyte
2020.026

Image courtesy of the artist and Laumont

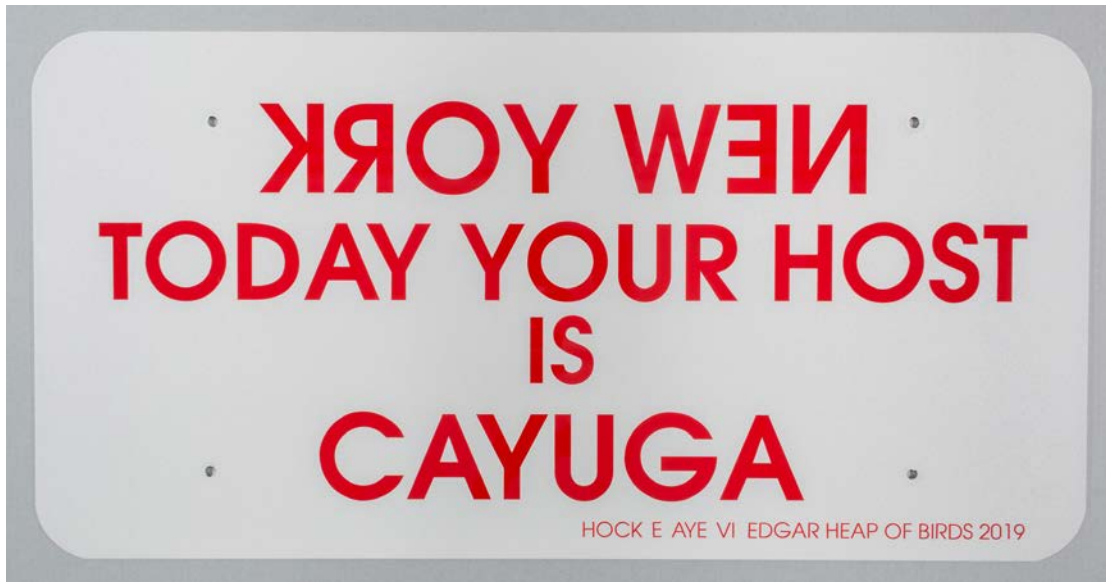
Selected acquisitions



Diego Rivera
Mexican, 1886–1957
Fruits of Labor, 1932
Lithograph, edition 56/100
Image: 16 1/2 × 11 13/16 inches (41.9 × 30 cm);
Sheet: 20 5/16 × 14 3/4 inches (51.6 × 37.5 cm)
Acquired through the Frank and Margaret Robinson
Prints, Drawings, and Photographs Endowment, supplemented
by the Herbert F. Johnson, Class of 1922, Endowment
2020.027

© Banco de Mexico Diego Rivera & Frida Kahlo Museums Trust, D.F. /
Artists Rights Society (ARS), New York

Selected acquisitions



Hock E Aye Vi Edgar Heap of Birds
Cheyenne and Arapaho, born 1954
Native Host IV, 2019
Vinyl on aluminum
18 × 36 inches (45.7 × 91.4 cm)
Acquired through the Beth Treadway, Class of 1970, and
Stephen Treadway, Class of 1969, Fund
2020.035

Courtesy of the artist

Selected acquisitions



Nona Faustine
American, born 1977
*Negro burying ground, Elmendorf Reformed Church,
Harlem 1666–1869*, 2016
Inkjet print
Frame: 27 1/4 × 40 11/16 × 11/2 inches (69.2 × 103.3 × 3.8 cm)
Acquired through the generosity of Deborah Goodman Davis,
Class of 1985, and Gerald R. Davis, Class of 1984
2020.047

Image courtesy of the artist and Higher Pictures

Selected acquisitions



The Master of Frankfurt

Flemish, 1460–after 1518

Adoration of the Magi, 1500

Oil on canvas (transferred from panel)

Canvas: 38 1/2 × 62 inches (97.8 × 157.5 cm);

Frame: 47 3/4 × 71 1/2 inches (121.3 × 181.6 cm)

Gift of Alan B. Harris, Class of 1953, and Elizabeth Heekin Harris

2020.056

Selected acquisitions



Wendy Red Star

Apsáalooke (Crow), born 1981 in Billings, Montana

Rez Car, from the series *My Home Is Where My Tipi Sits*, 2011

Inkjet print

Edition 1/4

Frame: 61 × 76 inches (154.9 × 193 cm)

Acquired through the Frank and Margaret Robinson

Prints, Drawings, and Photographs Endowment

2021.001

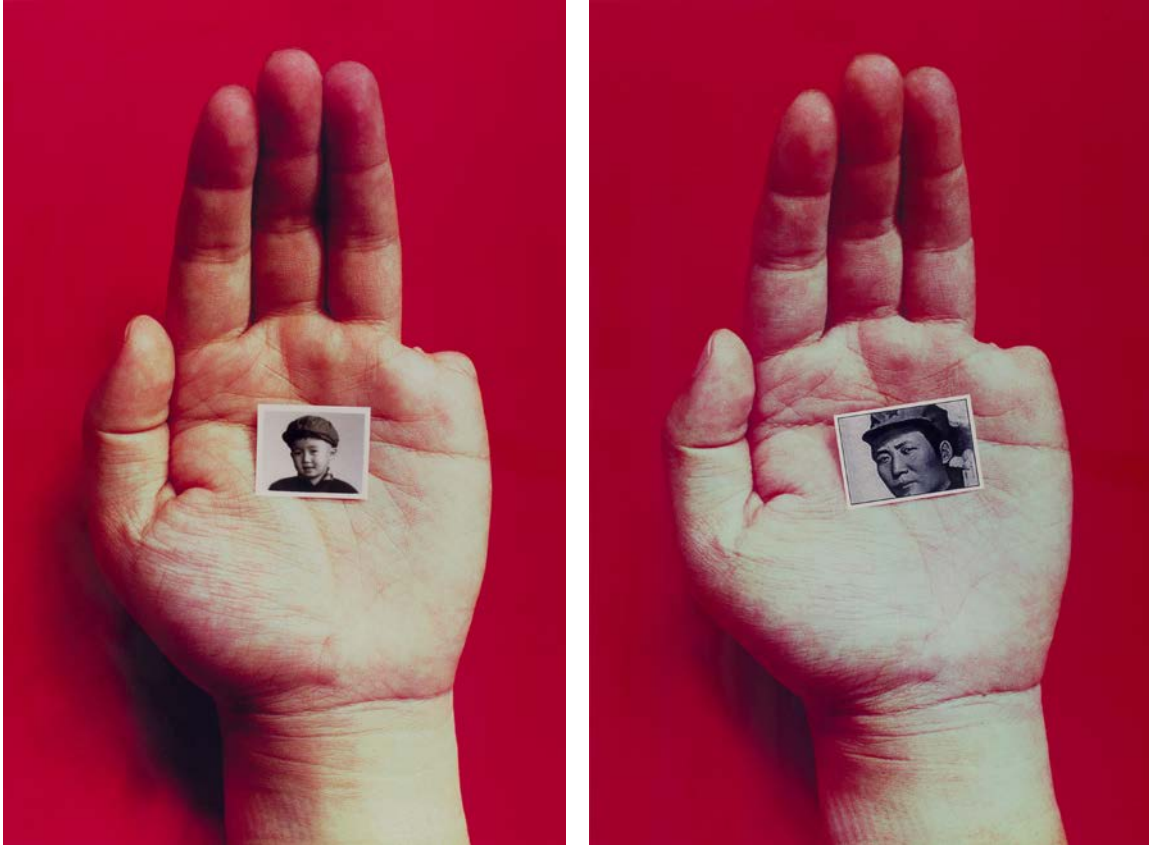
Courtesy of the artist and Haw Contemporary

Selected acquisitions



Ida Kohlmeyer
American, 1912–1997
Cloistered No. 9, 1969
Mixed media on canvas
28 × 49 7/8 inches (71.1 × 126.7 cm)
Acquired through the
David Findlay, Jr., Class of 1955, MBS 1957, Fund
2021.011

Selected acquisitions



Sheng Qi
Chinese, born 1965

Artist as a Young Boy, 2004 (at left)
Chromogenic print, AP 2/2
35 7/16 × 23 9/16 inches (90 × 59.8 cm)
2021.062.006

Young Mao, 2004 (at right)
Chromogenic print, edition 4/10
35 7/16 × 23 9/16 inches (90 × 59.8 cm)
2021.062.007

Gifts of the Torpey Family: Neil A. Torpey, JD 1985,
and Piper A. Torpey, Class of 2021

Exhibitions and installations

Fall 2020

Christian Marclay: Lids and Straws (One Minute)
November 7–24 (facade projection)

Good Looking: Curricular Connections at the Johnson Museum

Curricular installations

Albrecht Dürer: Visionary Printmaker installed for “Introduction to Print Media” (ART 2301)

Nam June Paik: Pioneer of International TV and Video Art installed for “History Will Be Televised” (GERST 3410)

Rough Cuts: German Expressionist Prints installed for “Print Matters: Print Culture from the Medieval to the Modern” (GERST 3075, SHUM 3075)

Relationships, Complex Connectivity, and Hope in the Age of COVID-19 installed for “Ways of Knowing: Indigenous and Place-Based Ecological Knowledge” (AIS/NTRES/AMST 3330 & NTRES 6330)

Green Armor installed for “Curating Fashion Exhibitions” (SHUM 4651/6651, ARKEO 6651, VISST 4651/6651)

Anselm Kiefer, *Dein Goldenes Haar, Margarethe (Your Golden Hair, Margarethe)*, installed for “Literary Texts and Contexts: The Myth of 1968” (GERST 2020)

Installations for “Threads of Consequence: Textiles in South and Southeast Asia” (ARTH 4855, ASIAN 4487/6644, VISST 4855/6855)

Installation for “Introduction to Modern Western Art: Materials, Media, and the End of Masterpieces” (ARTH 2600)

Installation for “Perspectives on Spain in Spanish” (SPAN 2235)



Yein Lillian Lee installing her work in the Spring 2021 BFA '21 group show *Interplay* (see page 14).

Installation for “Environment and Sustainability Colloquium” (ENVS 2000)

Installation for Curatorial Practicum (ARTH 4110/6010)

AAP student installations

Group Show: Art Students at the Johnson

Zeke Estes, BFA '21; Simge Guclu, BFA '21; Lane Letourneau, BFA '21; Lindsey Potoff, BFA '22; Adam Shulman, BFA '23, and Ruby Angelina D'Aluisio Trabka, BFA '21

Group Show: Maximum Occupancy

Morgan Evans-Weiler, MFA '21; Erika Germain, MFA '22; Kirk Henriques, MFA '21; Christine McDonald, MFA '22; Erin Miller, MFA '22; David Nasca, MFA '22; Grace Sachi-Troxell, MFA '21; Paloma Vianey, MFA '21; Xiaoyao Yao, MFA '21; and Layla Zubi, MFA '22

University partnerships

Fall 2020 classes served

Advanced Spanish Writing Workshop (SPAN 2180)
Ancient Peoples and Places
(ANTHR 1200, ARKEO 1200)
Art Histories: An Introduction
(ARTH 1100, SHUM 1100)
Aspects of Medieval Culture (MEDVL 1101, FWS)
Black Speculative Fiction (ENGL 4605,
AMST 4603, ASRC 4655, SHUM 4605)
Creative Writing (ENGL 2800)
Curating Fashion Exhibitions (SHUM 4651/6651,
ARKEO 6651, VISST 4651/6651)
Curatorial Practicum (ARTH 4110/6010)
Emerging Dimensions in Urban Ecology and
Sustainable Practices (LA 4070)
Engineering Seminar (ENGRG 1050)
Environment and Sustainability Colloquium
(ENVS 2000)
Fashion, Art, and Design Thinking (FSAD 1250)
Greek Myth (CLASS 1531, FWS)
Greek Mythology (CLASS 2604)
Grounding in Landscape Architecture I (LA 1410)
History Will Be Televised (GERST 3410)
Human Development: Infancy and Childhood
(HD 1150)
Humanities Scholars Program
Integrating Theory and Practice I (LA 3010)
Introduction to Modern Western Art: Materials,
Media, and the End of Masterpieces (ARTH 2600)
Introduction to Painting (ART 2201)
Introduction to Photography (ART 2601)
Introduction to Print Media (ART 2301)
Introduction to Southeast Asia (ASIAN 2208)
Literary Texts and Contexts: The Myth of 1968
(GERST 2020)
Mughal India and the Early Modern World
(HIST 2749, ASIAN 2274)

Performing Islam in Southeast Asia
(ASIAN 3311/6611, NES 3511, RELST 3311)
Perspectives on Spain in Spanish (SPAN 2235)
Philosophy of the Arts (PHIL 2510)
Photography: Special Topics (ART 3699)
Policy Issues in Disaster Prevention and Recovery
(PADM 5734)
Print Matters: Print Culture from the Medieval to the
Modern (GERST 3075, SHUM 3075)
Print Media: Introduction to Print Media (ART 2301)
Proseminar: Introduction to Methods
(ARTH 4101/6101, VISST 4101)
Race and Sex: Arabian Nights (NES 2700)
Science, Technology, and Politics (STS 1101)
Short Stories (ENGL 1170, FWS)
Spanish Intermediate Composition and
Conversation II (SPAN 2095)
Special Topics: Photographic Ways (ART 3699)
Sweetness: How Sugar Built the Modern World
(ROMS 3010, ASRC 3010, LATA 3015, SHUM 3010)
Threads of Consequence: Textiles in South and
Southeast Asia (ARTH 4855, ASIAN 4487/6644,
VISST 4855/6855)
Ways of Knowing: Indigenous and Place-Based
Ecological Knowledge (AIIS/NTRES/AMST 3330 &
NTRES 6330)
Wonderous Literatures of the Near East
(COML 2754, JWST 2754, NES 2754, SHUM 2754)
Word and Image: Tender Queer Futures (ENGL 1183)
Worlding Sex and Gender (FGSS 2421, ANTHR 2421,
LGBT 2421)
Writing About Art (ARTH 1172, FWS)
Writing About Literature (ENGL 1270, FWS)
Writing Berlin (GERST 1121)
Writing the Environment: Conservation,
Conservatories, Conservancies (ENGL 1130)

Exhibitions and installations

Spring 2021

Paul Pfeiffer: Morning After the Deluge
February 11–25 (facade projection)

Extraction, Consumption, and Resistance

This curricular exhibition was curated by Leah Sweet, Lynch Curatorial Coordinator for Academic Programs, in collaboration with Tao Goffe, College of Arts and Sciences; Kathryn Latour, SC Johnson College of Business; and Xoco Shinbrot and Peter McIntyre, College of Agriculture and Life Sciences

Curricular installations

HIV/AIDS Education, installed for
“Introduction to Global Health” (NS 2600)

Fashion in Transit, installed for “Curating Fashion Exhibitions” (SHUM 4651/6651, ARKEO 6651, VISST 4651/6651)

Earth Art, installed for “After Nature: Art and Environmental Imagination” (ARTH 3620)

Abelardo Morell, *Camera obscura image of La Giraldilla de la Habana in room with broken wall*, installed for “Spanish Intermediate Composition and Conversation II” (SPAN 2095) and “Advanced Spanish Writing Workshop” (SPAN 2180)

Installations for “A Global History of Love” (ASIAN 1193, FGSS 1940, HIST 1930, LGBT 1940, SHUM 1930)

Installation for “Craft Culture—Craft, Art & Gender in Context” (ANTHR 1101, FWS)

Installation for “Hieroglyphs to HTML: History of Writing” (CLASS 2812, ARKEO 2812, LING 2212, NES 2812, SHUM 2812, STS 2812, VISST 2812)

Installation for “Humanities Scholars Research Methods” (SHUM 3750, ANTHR 3950, ASIAN 3375, NES 3750)

AAP student installations

Erika Germain, MFA '22: *A Thought Shaped Surface*
Group Show: *What Ends Up in a Book*

Christine McDonald, MFA '22: *Passenger*

Zeke Estes, BFA '21, Fernan Bilik, B.Arch. '22, and Haani Jetha, BFA '22: *Sport Culture*

Group Show: *An Anthropology of Everything*
Curated by Morgan Evans-Weiler, MFA '21

David Nasca, MFA '22: *Midnight Zone*

Layla Zubi, MFA '22: *Between Planned Worlds*

Olivia Breibart, BFA '21, and Dylan Brenner, BFA '21: *Lovely and Lonely Places*

Cecilia Lu, BFA '22: *Ghost Stories*

Sabrina Haertig, BFA '22: *Es Lo Que Tenemos*

Alexa Kanarowski, BFA '22: *19/Nineteen*

Paloma Vianey, MFA '21: *Lo Que Queremos (What We Want)*

Erika Germain, MFA '22, and Erin Miller, MFA '22: *Wonder, Wander*

Grace Sachi Troxell, MFA '21: *Potato Séance*

Morgan Evans-Weiler, MFA '21: *Joyous Decay*

Kirk Henriques, MFA '21: *Traditions of Men*

Xiaoyao Yao, MFA '21: *On My Way*

Group Show: *Uncharted Territory:*

Artwork by twenty-nine BFA students in Advanced Practice (ART 3006), taught by Associate Professor Carl Ostendarp and Assistant Professor Dan Torop, with help from graduate assistant Paloma Vianey, MFA '21

Lane Letourneau, Emery Bergmann, Simge Guclu, Lauren Williams, Della Shi, and Gwyneth Haidar: *Between Zero and One Lies Infinity* (BFA '21 group show)

Allison Arteaga, Tyra Kim, Yein Lillian Lee, Ariel Noh, and Jane Park: *Interplay* (BFA '21 group show)

University partnerships

Spring 2021 classes served

Advanced Spanish Writing Workshop (SPAN 2180)

After Nature: Art and Environmental Imagination (ARTH 3620)

Art and Empire in Britain and France (ARTH 4621, ARTH 6621)

Art Re-Planning Cities (CRP 3850/5850)

College Scholar Seminar (COLLS 2001)

Consulting for Nonprofit and Government Organizations (PADM 5900)

Craft Culture—Craft, Art & Gender in Context (ANTHR 1101, FWS)

The Craft of Storytelling: Women's Writing (ROMS 1102) Creative Writing (ENGL 2810)

Cultural Identities/Cultural Differences: Post Cards From Paradise (ROMS 1108)

Ethics and the Environment (BSOC 2061/STS 2061/PHL 2960)

Fashion Draping (FSAD 2640)

Fashion, Aesthetics, and Society (FSAD 2190)

Field Research in the Ecological Arts (ENVS 4940)

Food, Ecology, and Agrarian Change (DSOC 7500)

Freud and the Invention of Psychoanalysis (COML 3781/6783 FGSS 3651, FREN 6561, GERST 3561, ROMS 3560, STS 3651)

A Global History of Love (ASIAN 1193, FGSS 1940, HIST 1930, LGBT 1940, SHUM 1930)

Global Water Sustainability (NTRES 1201)

Hieroglyphs to HTML: History of Writing (CLASS 2812, ARKEO 2812, LING 2212, NES 2812, SHUM 2812, STS 2812, VISST 2812)

Humanities Scholars Research Methods (SHUM 3750, ANTHR 3950, ASIAN 3375, NES 3750)

Introduction to Global Health (NS 2600)

Introduction to Humanities (SHUM 2750, STS 2750)

Introduction to Visual Studies (VISST 2000, ARTH 2000, COML 2000, AMST 2000)

Luxury Marketing (HADM 4435/6435)

Marketing Management for Services (HADM 2430)

Museum and Park Interpretation (PLSCI 4825)

Nature and Culture (NTRES 2320)

Photography: Special Topics (ART 3699)

Postcolonial Remix (ENGL 1168, FWS)

Print Media: Introduction to Print Media (ART 2301)

Sardis: A City at the Crossroads (CLASS 7755/4755, ARTH 6353/4353, ARKEO 4353/7353)

Science in Human Culture (SHUM 2750, STS 2750)

Short Stories (ENGL 1170, FWS)

Spanish Intermediate Composition and Conversation II (SPAN 2095)

Special Topics in Architecture, Culture, and Society (ARCH 4408/6408, AMST 6809, ASRC 6819, FGSS 6819, SHUM 6819)

Theoretical Foundations (LA 5900)

University partnerships

Departments and Programs at Cornell

Africana Studies and Research Center
 American Indian and Indigenous Studies Program
 American Studies Program
 Carol Tatkon Center
 Center for Teaching Innovation (CIT)
 College of Architecture, Art, and Planning
 College of Engineering
 Cornell Institute for Public Affairs
 Cornell School of Hotel Administration
 Cornell University Library
 Cornell's Adult University (CAU)
 Department of Anthropology
 Department of Archeology
 Department of Art
 Department of Asian Studies
 Department of City and Regional Planning
 Department of Classics
 Department of Comparative Literature
 Department of Development Sociology
 Department of Fiber Science and Apparel Design
 Department of German Studies
 Department of History
 Department of the History of Art and Visual Studies
 Department of Human Ecology
 Department of Landscape Architecture
 Department of Literatures in English
 Department of Natural Resources
 Department of Near Eastern Studies
 Department of Philosophy
 Department of Romance Studies
 Department of Science and Technology Studies
 Division of Nutritional Sciences
 Environmental and Sustainability Program
 Feminist, Gender, and Sexuality Studies
 Fiber Science and Apparel Design
 Humanities Scholar Program
 Jewish Studies Program
 Lesbian, Gay, Bisexual, and Transgender Studies
 Office of Visitor Relations
 School of Integrative Plant Sciences
 Society for the Humanities
 Student and Campus Life



A Museum session of "Photography: Special Topics" (ART 3699) with curator Kate Addleman-Frankel, Fall 2020 (see page 13).

Organizations and groups at Cornell

Cayuga Society
 College Scholar Program
 Cornell Asian Alumni Association
 Cornell Campus Club
 Cornell Class of '66
 Cornell Club of NYC
 Cornell Club of Sarasota-Manatee, FL
 Cornell Protestant Cooperative Ministry
 Cornell Tower Club
 Crème de Cornell
 Global Tea Club
 Prefreshman Summer Program

Other colleges and universities

Brown University, RI

University programs

	PARTICIPANTS	PRESENTATIONS
Cornell	6,187	593
Other Colleges/Universities	51	2
TOTAL	6,238	595

University partnerships

Faculty Advisory Committee

Gerard Aching
Professor, Africana and Romance Studies

Michael Ashkin
Associate Professor and Chair, Department of Art

Xak Bjerken
Professor, Department of Music

Iftikhar Dadi
*Associate Professor and Chair, Department of
the History of Art and Visual Studies*

David Faulkner
*Senior Lecturer, John S. Knight Institute for
Writing in the Disciplines and English*

Denise Green
*Assistant Professor, Department of
Fiber Science and Apparel Design; and
Director, Cornell Costume + Textile Collection*

Salah M. Hassan
*Goldwin Smith Professor of African and African
Diaspora Art History and Visual Culture in the
Department of Africana Studies and Research
Center and the Department of the History of Art
and Visual Studies; and Director, Institute for
Comparative Modernities*

Cynthia Hazan
*Associate Professor, Department of
Human Development*

John Henderson
Professor, Department of Anthropology

Kent L. Hubbell
Professor, Department of Architecture

Johannes Lehmann
*Professor, School of Integrative Plant Science,
Soil and Crop Sciences Section*

Wolfgang H. Sachse
*Meinig Family Professor of Engineering Emeritus,
Sibley School of Mechanical and Aerospace
Engineering*

Daniel R. Schwarz
*Frederic J. Whiton Professor of English Literature
and Stephen H. Weiss Presidential Fellow*

Laurel Southard
*Senior Lecturer and Director of
Undergraduate Research at Cornell*

Michael Tomlan
*Professor and Director, Historic Preservation
Planning, Department of City and Regional Planning*

Lyrae Van Clief-Stefanon
Associate Professor, Department of English

Virtual program highlights

Fall 2020

Alumni Affairs and Development

“Behind the Scenes of East Coast Museums” with Brinda Kumar MA '10, PhD '15, assistant curator, Metropolitan Museum of Art; Sarah Humphreville '09, senior curatorial assistant, Whitney Museum of American Art; Dan Kershaw '78, exhibition design manager, Metropolitan Museum of Art; Jessica Levin Martinez, moderator

“Behind the Scenes of West Coast Museums” with Janet Bishop '85, chief curator, San Francisco Museum of Modern Art; América Castillo '17, Architecture and Design Department, San Francisco Museum of Modern Art; Natalia Di Pietrantonio '14, PhD '18, assistant curator, Southern Asian Art, Seattle Art Museum; Elizabeth Morrison MA '94, PhD '02, senior curator of manuscripts, J. Paul Getty Museum; Jessica Levin Martinez, moderator

“A Museum and a Mission: Collecting, Exhibiting, Educating” for the Class of 1966 with Jessica Levin Martinez

Cornell Club New York City

“Art, Death, and Commerce in the Dutch Golden Age: Using Bailly’s *Vanitas* Still Life for Interdisciplinary Teaching at the Johnson Museum” with Leah Sweet and Andy Weislogel

Tower Club and Cayuga Society

“Art and the Global Climate Struggle” with Jessica Levin Martinez, Ellen Avril, Kate Addleman-Frankel, Andy Weislogel, and artist Maureen Gruben

For Johnson Museum Members Only

“Introducing *A Boy with a Bird’s Nest* by Thomas Gainsborough” with Andy Weislogel

Family Time with the Johnson

Diane Macklin; Holly Adams; John Simon

Workshop

“Head of the Class: A Three-Part Portrait Drawing Class” with artist Bill Benson

Spring 2021

eCornell Keynote

“Fashion in Transit” with Denise Green, associate professor / director of the Cornell Fashion + Textile Collection; Rich Geddes, professor / founding director, Cornell Program in Infrastructure Policy; Joshua Johnson '21, Rawlings Cornell Presidential Research Scholar, Classics Committee on Diversity and Inclusion, Library Advisory Council; Christine McDonald, MFA '22; Kat Roberts, PhD '23; Mona Maher, PhD '24; and Leah Sweet

Alumni Affairs and Development

“Picturing America: Margaret Bourke-White” for the Class of 1966 with Carol Hockett

“Asian Art at the Herbert F. Johnson Museum of Art,” a recorded presentation for Cornell Asian American Alumni (CAAA) 2021 Pan-Asian Celebration with Ellen Avril

Cornell Clubs

“Excavating Ancient Egypt” children’s program for Cornell Club New York City with Carol Hockett and Andrea Murray

“An Insider View of the Johnson Museum” for Cornell Club of Sarasota-Manatee with Jessica Levin Martinez and Andrea Inselmann

Family Time with the Johnson

Tom Knight’s Puppets; Sarah Gotowka; Holly Adams cosponsored by the Cornell Lab of Ornithology

Workshop

“Classical Forms: A Three-Part Figure Drawing Class” with artist Bill Benson

School and community partnerships

School programs served

Tompkins County

Belle Sherman Elementary School, Ithaca
 Beverly J. Martin Elementary School, Ithaca
 Boynton Middle School, Ithaca
 Caroline Elementary School, Ithaca
 Cassavant Elementary School, Dryden
 Cayuga Heights Elementary, Ithaca
 DeWitt Middle School, Ithaca
 Dryden Elementary School, Dryden
 Dryden Middle School, Dryden
 Elizabeth Ann Clune Montessori School of Ithaca
 Enfield Elementary School, Ithaca
 Fall Creek Elementary School, Ithaca
 Freeville Elementary School, Dryden
 Ithaca High School, Ithaca
 Lansing High School, Lansing
 Lehman Alternative Community School, Ithaca
 Northeast Elementary School, Ithaca
 R. C. Buckley Elementary School, Lansing
 South Hill Elementary School, Ithaca
 Trumansburg Elementary School, Trumansburg
 Trumansburg Middle School, Trumansburg

Cortland County

Homeschoolers, Cortland

Chemung County

Horseheads Middle School, Horseheads
 Ridge Road Elementary School, Horseheads

Cayuga County

Millard Fillmore Elementary, Moravia

Tioga County

Nathan T. Hall Elementary School, Newark Valley
 Spencer–Van Etten Elementary School, Van Etten

Seneca County

South Seneca Elementary School, Interlaken

Harmony Science Academy, El Paso, TX
 Notre Dame DeSion High School, Kansas City, MO

Other facilities and organizations

Bridges Cornell Heights
 Central New York Humanities Corridor
 First Congregational Church
 First Presbyterian Church
 Forest Home Chapel
 Franziska Racker Center of Tioga County
 Greater Ithaca Activities Center (GIAC)
 Ithaca Sunrise Rotary Club
 Kendal of Ithaca
 Lifelong
 Longview Community
 Love Living at Home
 National Consortium for Teaching about Asia
 New York State Teacher Association
 P.E.O. International
 Strong Women Impacting Society
 Temple Beth-El
 Tompkins County Public Library
 Tompkins Learning Partners
 Trumansburg Conservatory of Art
 Unity House of Cayuga County
 Villa St. Benedict, Lisle, IL

School and community public programs

	PARTICIPANTS	PRESENTATIONS
School Programs <i>(tours & workshops K-12, teacher training)</i>	4,997	291
Campus/Community Collaborations <i>(lectures, public programs, presentations)</i>	888	22
Tours/Workshops—Adults	1,031	66
Tours/Workshops— Families and Children	535	23
TOTAL	7,451	402

Interns

Angela Chang '22
*The John A. Hartell
Intern (Rights and
Reproductions)*

Ariana Garcia-Cassini '21
Student Engagement

Andrew P. Gelfand,
JD Candidate '23
*Graduate intern for
African Art
(Summer 2021)*

Margaret Groton '21
*Graduate intern for
African Art
(Summer 2021)*

Natalia Gulick '21
Preparator

Alexa Kanarowski '22
Digital Studio

Wesley Kang '22
*The Grace Moak
Meisel Memorial
Asian Art Intern /
The Martie Young
Asian Art Intern /
Visitor Services*

Tomiris Kazhmurat '22
*Modern and
Contemporary Art /
Visitor Services*

Astara Light, PhD student
*Graduate intern for
Academic Programs*

Ashley Loke '22
*The Meyer A. and
Karen Charal
Gross Intern
(Academic Programs)*

Cecilia Lu '22
Photography Collection

Hannah Master '23
*Print Room /
Watermark Identification
in Rembrandt's Etchings
(WIRE) Intern /
The Nancy Horton Bartels
'48 Scholar for Collections
(Summer 2021)*

Isabelle McDonald '22
*The Alison Cheng Intern
for Photography*

Sophia Miller '23
*The Nancy and
Stephen Einhorn Intern
(School and Family
Programs)*

Bailey Regan '21
*Membership and
Development /
Visitor Services*

Shayla Sanchez '23
*The Richard and
Genevieve Tucker
Education Intern*

Mariana Seibold '21
*Print Room,
Earlier European
and America Art*

Ryun Shim '24
*The Nancy Horton Bartels
'48 Scholar for Education
(Summer 2021)*

Graham Stopa
*Graduate intern for
Provenance
(Summer 2021)*

Odessa Thompson '24
*School and Family
Programs*

Grace Tran '23
*The Rebecca Q. and
James C. Morgan
Garden Intern /
Visitor Services*

Santosh Adhikari '25
Jon Agramonte '23
Aaron Beiderman '24
Mia Brown-Seguin '24
Lauren Celardo '24
Steven Cha '24
Dana Chan '21
Subharghya Das '24
Bianny De La Cruz '23
Alex Duncan '24
Ashley Fan '23
Kaitlyn Feely '24
Maria Henriquez '23
Nadia Holcomb '23
Estelle Hooper '23
Kirstin Horn '21
Rayna Klugherz '23
Julia Kohn '24
Regina Lassiter '21
Mannayah Louis '24
Anna Lu '24
Devin Massari '21
Lisa Morton '23
Alexa Natale '24
Thais Salas '23
Audrey Sickles '23
Sparkle Sillim '24
Oliver Stern '24
Sabina Stock '24
Rahma Tasnim '23
Vanessa Vazquez '21
Shereya Venkatesh '21
Grace Yao '23
Kayla Zhang '23
Visitor Services

Student engagement and activities

Museum Club

Rayna Klugherz '23, *president*
Sophia Miller '23, *treasurer*
Jasmine Love '23, *outreach coordinator*

Madison Albano '22
Clara Enders '22
Ariana Garcia-Cassani '21
Alicia Gonzalez '24
Jenna Israel '21
Greg Kerr '24
Val Lenis '24
Aidan Reineman '22
Victoria Reiter '24
William Serrano '24
Tracy Zhang '23



Museum Club and SEAM (Student Educators: Art and the Museum) partnered with Cornell Campus Activities to create art-making kits to pair with at-home collection-themed projects to work on at virtual workshops.

Student Educators: Art & the Museum (SEAM)

Madison Albano '22, *president*
Ariana Garcia Cassani '21, *vice president*
Clara Enders '22
Aidan Reineman '22
Valerie Lenis '24

Take 'n' Make activity kits

Flower and leaf stamping
Clay hands

Student wellness virtual workshop

Collage-making with artist Sharon Walters

Tableau Vivant social media contest

Mimic a work of art in the Museum collection and stage a re-creation for Halloween

The Johnson Museum of Art's Wellness Initiative has been made possible by a generous member of the Museum's Advisory Council.



Ax Ortiz '24 re-creates *The Visitor* (1902), a watercolor by Albert Sterner (American, 1863–1946), a gift from the complete collection of Gertrude Godlman Tucker, Class of 1930, and David J. Tucker (2011.048.044).

Loans from the collection

Emma Amos
American, 1937–2020

Horizons, ca. 1968
Aquatint and sugarlift with two-color screenprint
on heavy wove paper
AP III
Image: 15 x 15 1/4 inches (38.1 x 38.7 cm);
Sheet: 28 x 19 7/8 inches (71.1 x 50.5 cm)
Gift of Caroline Goldsmith
81.126.004

Have Faith, 1991
Etching, aquatint, monotype, chine collé collage,
and African fabric on paper
Edition 7/8
Image / sheet:
31 1/2 x 40 7/8 inches (80 x 103.8 cm)
Acquired through the Truman W. Eustis III,
Class of 1951, Fund, and through the
generosity of the Class of 1951
2017.008

On view in the exhibition
Emma Amos: Color Odyssey
at the Georgia Museum of Art,
University of Georgia, Athens
(January 30–April 25, 2021)
and at the Munson-Williams-Proctor
Arts Institute, Utica, New York
(June 19–September 12, 2021)

Norman Bluhm
American, 1921–1999
Bleeding Rain, 1956
Oil on canvas
51 x 63 3/4 x 11 1/4 inches (129.5 x 161.9 x 3.2 cm)
Gift of Katherine Komaroff Goodman
77.074.001

On view in the exhibition
Norman Bluhm: Metamorphosis
at the Newark Museum, New Jersey
(February 13–August 16, 2020)

Andy Warhol
American, 1928–1987
Most Wanted Men No. 1, John M., 1964
Screenprints on linen
49 x 37 3/4 inches (124.5 x 95.9 cm), each
Acquired with funds provided by the
National Endowment for the Arts, and
through the generosity of individual donors
76.048 a,b

On view in the exhibition
Andy Warhol
at Tate, London
(March 12–November 15, 2020)
and Museum Ludwig, Cologne
(December 12, 2020–April 18, 2021)

Works conserved

Mary Bauermeister
German, 1934–2023

Only, 1962–69

Collage of stones

Overall (including frame):

14 × 14 × 2 1/2 inches (35.6 × 35.6 × 6.4 cm)

Gift of William Berley, Class of 1945

2018.023.011

José Guerrero

Spanish, 1914–1991

Untitled, 1968

Oil on canvas

28 5/8 × 39 3/8 inches (72.7 × 100 cm)

Gift of R. Wolcott Hooker, Class of 1921

73.079

Fernand Khnopff

Belgian, 1858–1921

Le Sang de Méduse, 1898

Lithograph, AP 1/5

Frame: 20 × 17 7/8 × 1 inches

(50.8 × 45.4 × 2.5 cm)

Acquired through the Herbert F. Johnson,

Class of 1922, Endowment

2018.022

Ida Kohlmeyer

American, 1912–1997

Cloistered No. 9, 1969

Mixed media on canvas

28 × 49 7/8 inches (71.1 × 126.7 cm)

Acquired through the David Findlay, Jr.,

Class of 1955, MBS 1957, Fund

2021.011

Al Loving

American, 1935–2005

Untitled, ca. 1969–70

Acrylic on three hexagonal canvases

Overall: 32 × 39 × 1 3/4 inches

(81.3 × 99.1 × 4.4 cm)

Gift of Arthur Penn, Class of 1956, and

Marilyn Penn

91.093.001 a-c

Miriam Schapiro

American, 1923–2015

Another Spring, 1985

Acrylic, fabric, and beads on paper

15 1/2 × 30 inches (39.4 × 76.2 cm)

Gift of Isabel and William Berley,

Classes of 1947 and 1945

99.078.009

Su Jiankuan

Chinese, 1876–1942

A Painting of Antiquities, 1926

Hanging scroll: ink on paper, mounted on silk

39 × 19 1/16 inches (99 × 48.4 cm);

Acquired through the Lee C. Lee

Endowment for East Asian Art

2019.036

Collections support

Donors of gifts-in-kind

Ann Baumann Trust, in honor of the career and scholarship of Nancy E. Green

Sandra Berler and David K. Berler, Class of 1955, MD 1958

Ann E. Berman, Class of 1974, and Samuel S. Spektor, Jr.

Dr. Terry Box and Lee Anne Box

Jay E. Cantor, Class of 1964, in honor of Nancy E. Green

Miriam Zinder Cutler, Class of 1956, in honor of her Class's 65th Reunion

Gary Davis, Class of 1976

Roslyn Bakst Goldman, Class of 1959, and John L. Goldman, JD 1959, in recognition of Nancy E. Green's longstanding service and commitment to the Museum, its patrons, staff, students, and many friends, upon her retirement from a distinguished and meritorious career as the Gale and Ira Drukier Curator of European and American Art, Prints & Drawings, 1800–1945

Marcia L. Goldstein, Class of 1973, JD 1975, and Mark L. Goldstein, Class of 1972, MBA 1975, JD 1976

Nancy E. Green and Douglas Fowler

Howard Greenberg

Alan B. Harris, Class of 1953, and Elizabeth Heekin Harris

Gift of Michael I. Jacobs, MD 1977

Nelson T. Joyner, Jr., Class of 1959, and Susanne Joyner

Bequest of L. William Kay II, Class of 1951

Younghee Kim-Wait, in honor of Cathy Rosa Klimaszewski

Gay Leonhardt and Clifton Leonhardt, Class of 1969

Alan Lipton

Pace Prints, in memory of Louise Nevelson Yigal Ozeri, and Louis K. and Susan P. Mesiel

Margaret and Frank Robinson, in honor of Nancy E. Green

Raushan Sapar

Bequest of Lottie Salton

Kazuko Smith

Ryan Stommel, Class of 2019

Alaine Troisi

Joan and George Violin

Dolores D. and Clifton R. Wharton, Jr.

Fred Widding, Class of 1966, MEng 1967, and Mary Widding

Deaccession funds

Dr. Alfred Greisman, Class of 1955, and Linda Greisman; George and Mary Rockwell; Dr. Jerry Silver and Karen Silver; Drs. Lee and Connie Koppelman; Arnold C. Franco and Beverly R. Franco; Sarita Hopkins Weeks; Mr. and Mrs. Charles Pollan; Willard Straight, Class of 1901

Jennis R. Galloway; Victor and Marie Cole; N. Battle Hales and Jean Hales; Robert Purcell, Class of 1932; Leverett S. Woodworth, MD 1926, and Iris L. Woodworth; Anne Sampson, Class of 1939, and Martin Sampson, Class of 1939; Dr. and Mrs. Henry D. Rosen; and Colonel John R. Fox

The Estate of Charles Baskerville, Class of 1919

Collections support

Funds applied toward acquisitions

Nancy Horton Bartels, Class of 1948, Endowment
John H. Burris, Class of 1954, Fund
Class of 1962 Fund for Photography, in honor of the Class's 60th Reunion
Class of 1962 Fund for Photography, in memory of Jan McClayton Crites, Class of 1962, and in honor of the Class's 60th Reunion
Lynne and Matt Conway, in memory of Ian Alberta, Class of 2006
Deborah Goodman Davis, Class of 1985, and Gerald R. Davis, Class of 1984
Jennifer, Gale, and Ira Drukier Fund
Truman W. Eustis III, Class of 1951, Endowment
David Findlay, Jr., Class of 1955, MBS 1957, Fund
Douglas Fowler
John Potter Franzen, Class of 1970, and Ann Kavicky Franzen, Class of 1975, in honor of Jack Merlin Cudlip, Class of 1949 and Sal Cudlip
Friends of Photography Acquisition Committee
Herbert F. Johnson, Class of 1922, Endowment
Ronay Menschel, Class of 1964, and Richard Menschel
Museum Purchase Fund
Warner L. Overton, Class of 1922, Endowment
Frank and Margaret Robinson Prints, Drawings, and Photographs Endowment
George and Mary Rockwell Fund
David M. Solinger, Class of 1926, Endowment
Stern Family Contemporary Art Acquisition Fund
Judith Stoikov, Class of 1963
Richard Sukenik, Class of 1959, Endowment for Photography

Beth Treadway, Class of 1970, and Stephen Treadway, Class of 1969, Fund
Malcolm Whyte, Class of 1955, and Karen Whyte
Stephanie L. Wiles Endowment

Donors to acquisition funds

Elliot Cattarulla, Class of 1953, and Kay Cattarulla, Class of 1955
Donors to the Class of 1962 Photography Fund
Donors to the Class of 1970 Art Purchase Fund
Matt and Lynne Conway
Deborah Goodman Davis, Class of 1985, and Gerald R. Davis, Class of 1984
John Potter Franzen, Class of 1970, and Ann Kavicky Franzen, Class of 1975
Donors to the Friends of Photography Acquisition Fund
Nancy E. Green
Department of the History of Art faculty and staff
Amy Jai-Sien Lai, Class of 1999
Evalyn Edwards Milman, Class of 1960, and Stephen E. Milman, Class of 1958
Daniel R. Schwarz and Marcia Jacobson
Judith Stoikov, Class of 1963, and Richard Miller
Nancy Sukenik
Stephen Treadway, Class of 1969 and Beth Treadway, Class of 1970

Foundation, government, and corporation support

Adler Foundation
American Endowment Foundation
The Andrew W. Mellon Foundation
Apple*
Architron Cadd LLO*
Benevity*
Biogen Research Corporation*
BlackRock Financial Management*
Bristol-Myers Squibb Company*
California Community Foundation
ChevronTexaco Corporation*
Citrin Family Foundation
Cornell Foundation
Cornell University Foundation (UK) Ltd.
Daniel K. & Betty Roberts Family Foundation
David M. & Hope G. Solinger Foundation
Deloitte Foundation*
E*Trade
E. Rhodes & Leona B. Carpenter Foundation
The Ellen and Gary Davis Foundation
Evanston Community Foundation
ExxonMobil Foundation*
The Fein/Ross Family Foundation
Fidelity Charitable Gift Fund
Gladys Kriebel Delmas Foundation
Gloria Levine & Harvey Levine Charitable Foundation
Google Incorporated*
Greater Cincinnati Foundation
Herbert & Roseline Gussman Foundation
IBM Corporation*
The Investment Center
J. M. McDonald Foundation
The James R. K. Kantor Trust
Jewish Communal Fund of NY
Jewish Community Federation
Jewish Federation of Greater Atlanta
Johnson Charitable Gift Fund
Kanders Foundation
Klondike Resources
Mastercard International Incorporated*
The Meinig Family Foundation
The Midvale Foundation
Milberg Factors
Morris & Rosalind Goodman Family Foundation
National Endowment for the Arts

New York Community Trust
New York State Council on the Arts
Oath*
Opatrny Family Foundation
Park Avenue Charitable Fund
Pimco Foundation*
Prudential Insurance Foundation*
Ralph M. Wynn Foundation
The Randy Ann Ehrenberg Trust
Robert G. and Jane V. Engel Foundation
Ronald P. and Susan E. Lynch Foundation
Schwab Fund for Charitable Giving
Sidney A. & Libby Fine Foundation
State Street Bank & Trust Co.*
Terra Foundation for American Art
Tompkins Charitable Gift Fund
UBS*
Vanguard Charitable
Vanguard Charitable Endowment Program
The Vizcarrondo Family Foundation

Grant awards

As part of a four-year, \$5 million-grant to Cornell University from the Andrew W. Mellon Foundation's Just Futures Initiative, the Museum received \$500,000 for a three-year period to support visiting artists projects at the Museum and on campus. Cornell's "Migrations: A Global Grand Challenge" project unites scholars across the university and beyond to study the intersections between migration, racism, and dispossession.

A Mellon Foundation Architecture, Urbanism, Humanities Program grant supporting a partnership between the Colleges of Architecture, Art, and Planning and Arts & Sciences was extended to include the Museum and Cornell Library, totaling \$33,000 over three years. The Museum will support both the Architecture, Urbanism, and Humanities (AUH) Seminars and its Public Expression Curatorial Project in conjunction with the 2022 Cornell Biennial.

** matching gifts*

Financial statements

Statement of Overall Revenue and Expenditures

FOR THE YEAR ENDED JUNE 30,

	2020-21	2019-20	2018-19
<i>Support and Revenue</i>			
University Appropriation	\$2,221,126	\$2,429,405	\$2,316,027
Endowment & Investment Income	\$1,645,525	\$1,672,116	\$1,569,333
Restricted Gifts*	\$1,287,964	\$474,088	\$281,005
Annual Fund	\$804,166	\$565,170	\$701,814
Grants & Foundations	\$136,976	\$198,393	\$248,429
Rental of Facility	\$2,300	\$51,861	\$104,655
Other Earned Income	\$7,207	\$37,130	\$48,375
Deaccessioning (restricted)	\$214	\$42,906	\$6,091
TOTAL INCOME	\$6,105,478	\$5,471,069	\$5,275,729
* Not reflected here are gifts to the Museum's endowment; these gifts totaled \$3,369,321 in 2020-21.			
<i>Expenditures</i>			
<i>Program</i>			
Curatorial Departments	\$830,682	\$1,008,101	\$1,042,407
Education	\$427,924	\$388,107	\$481,832
Registrar & Installation	\$441,682	\$474,351	\$462,973
Digital Access Project	\$50,562	\$50,853	\$50,718
Exhibitions	\$98,884	\$295,982	\$274,296
Conservation	\$50,912	\$4,932	\$110,283
TOTAL PROGRAM	\$1,900,646	\$2,222,326	\$2,422,509
<i>Capital</i>			
Art Purchases	\$538,218	\$664,659	\$381,091
Other Capital	\$145,000	\$236,530	\$145,549
TOTAL CAPITAL	\$683,218	\$901,189	\$526,640
<i>Public Affairs</i>			
Development	\$188,326	\$168,329	\$170,024
Publications	\$101,025	\$123,893	\$125,990
Membership	\$80,527	\$84,857	\$85,950
TOTAL PUBLIC AFFAIRS	\$369,878	\$377,079	\$381,964
<i>Building</i>			
Security	\$239,238	\$401,264	\$385,755
Gallery Maintenance	\$41,948	\$45,636	\$45,230
Building Maintenance	\$456,634	\$443,712	\$354,539
Utilities	\$335,565	\$352,735	\$430,751
Rental of Facility	\$0	\$106,585	\$69,297
TOTAL BUILDING	\$1,073,385	\$1,349,932	\$1,285,572
<i>Administration</i>			
Business Operations	\$288,759	\$364,254	\$413,373
Director's Office	\$419,332	\$437,604	\$121,894
Computer Support	\$26,587	\$11,236	\$13,356
TOTAL ADMINISTRATION	\$734,678	\$813,094	\$548,623
TOTAL EXPENDITURES	\$4,761,805	\$5,663,620	\$5,165,308
Gifts to Museum Endowment*	\$3,369,321	\$212,128	\$705,658
Market Value of Endowment (restricted)	\$34,750,000	\$23,952,000	\$23,146,000
Market Value of Endowment (unrestricted)	\$18,895,000	\$14,696,000	\$12,433,000
Market Value of Endowment Total	\$53,645,000	\$38,648,000	\$35,579,000

Financial statements

Statement of Operating Revenue and Expenditures

FOR THE YEAR ENDED JUNE 30,

	2020-21	2019-20	2018-19
<i>Support and Revenue</i>			
University Appropriation	\$2,221,126	\$2,429,405	\$2,316,027
Endowment Income	\$1,248,439	\$1,287,012	\$1,204,298
Restricted Gifts for Operations	\$72,165	\$32,298	\$88,797
Annual Fund	\$804,166	\$565,170	\$701,814
Grants & Foundations	\$136,976	\$198,393	\$248,429
Rental of Facility	\$2,300	\$51,861	\$104,655
Other Earned Income	\$7,207	\$37,130	\$48,375
OPERATING INCOME	\$4,492,379	\$4,601,269	\$4,712,395
<i>Expenses</i>			
<i>Program</i>			
Curatorial Departments	\$830,682	\$1,008,101	\$1,042,407
Education	\$427,924	\$388,107	\$481,832
Registrar & Installation	\$441,682	\$474,351	\$462,973
Exhibitions	\$98,884	\$295,982	\$274,296
Conservation	\$55,562	\$4,932	\$110,283
Digital Access Project	\$50,912	\$50,853	\$50,718
TOTAL PROGRAM	\$1,905,646	\$2,222,326	\$2,422,510
<i>Public Affairs</i>			
Development	\$188,326	\$168,329	\$170,024
Publications	\$101,025	\$123,893	\$125,990
Membership	\$80,527	\$84,857	\$85,950
TOTAL PUBLIC AFFAIRS	\$369,878	\$377,079	\$381,964
<i>Building</i>			
Security	\$239,238	\$401,264	\$385,755
Gallery Maintenance	\$41,948	\$45,636	\$45,230
Building Maintenance	\$456,634	\$443,712	\$354,539
Utilities	\$335,565	\$352,735	\$430,751
Rental of Facility	\$0	\$106,585	\$69,297
TOTAL BUILDING	\$1,073,385	\$1,349,932	\$1,285,572
<i>Administration</i>			
Business Operations	\$288,759	\$364,254	\$413,373
Director's Office	\$419,332	\$437,604	\$121,894
Computer Support	\$26,587	\$11,236	\$13,356
TOTAL ADMINISTRATION	\$734,678	\$813,094	\$548,623
Operating Expenses	\$4,083,587	\$4,762,431	\$4,638,669
Operating Results	\$408,792	-\$161,162	\$73,726

* These results are derived from the statement of overall revenue and expenditures (see page 27).

Operating results do not include art purchases and capital expenditures or the funding used to support them.

Staff

Kate Addleman-Frankel
Gary and Ellen Davis
Curator of Photography

Luke Andrews
Security and Events
Associate

Ellen Avril
Chief Curator and
Curator of Asian Art

Carol Anne Barsody
Administrative Assistant
to the Director and
Deputy Director

David O. Brown
Museum Photographer

Angela Burgio
Assistant Registrar

Courtney Campbell
Director of Development

Matt Conway
Registrar

Milo Dela Cruz
Accounts Manager

Peter Gould
Deputy Director and
Director of Finance
and Administration

Nancy E. Green
Gale and Ira Drukier
Curator of European and
American Art, Prints &
Drawings, 1800–1945

Carol Hockett
Coordinator of School
and Family Programs

Andrea Inselmann
Curator of Modern and
Contemporary Art

Laura Libert
Curatorial Assistant

Chris Loomis
Assistant Preparator

Jessica Levin Martinez
Richard J. Schwartz
Director

Andrea Murray
Lead Educator and
Pre-K-12 Curriculum
Development Specialist

Maryterese
Pasquale-Bowen
School Programs
Assistant

Andrea Potochniak
Editorial Manager

Sue Rakow
Kids Discover the Trail!
Assistant

Anissa Rahadiningtyas
Curatorial Assistant for
Asian Art

Gemma Rodrigues
Ames Director of
Education and
Curator of the Global
Arts of Africa

David Ryan
Chief Preparator and
Building Coordinator

Jennifer Ryan
Annual Fund and
Membership
Coordinator

Elizabeth Saggese
Administrative Assistant
for Education

Amanda Schaufler
Visitor Services
Associate

Holly Smith
Chief of Security and
Special Events
Coordinator

Leah Sweet
Lynch Curatorial
Coordinator for
Academic Programs

Annmarie Ventura
Andrew W. Mellon
Coordinator of
Student Engagement

Chad Walsh
Visitor Services
Associate

Andrew Weislogel
Seymour R. Askin, Jr.
'47 Curator, Earlier
European and
American Art

William J. Woodams
Preparator

Members and special gifts

New gifts to endowment funds

Cattarulla-Hartell Contemporary Art Acquisition Endowment

Meyer A. and Karen Charal Gross Internship Endowment

Gary and Ellen Davis Curator of Photography

Johnson General Operating Endowment

Patricia M. Stewart Gallery for Ancient Art

June W. Holt '47 and Leon C. Holt, Jr. Education Endowment

June W. Holt '47 and Leon C. Holt, Jr. Endowed Internship

Ralph and Jeanne Kanders Museum Library Endowment

Sherry and Joel Mallin Director's Discretionary Endowment

Grace Moak Meisel Memorial Internship Endowment

Evalyn Edwards Milman '60 & Stephen E. Milman '58 Acquisition Endowment

Robert and Kazuko Smith Purchase Endowment

Judith H. Stoikov Curator of Asian Art

Richard Sukenik '59 Endowment for Photography

Treadway Museum Collection Endowment

Gifts \$1,000,000 and greater

Evalyn Edwards Milman and Stephen Milman

Judith Stoikov and Richard Miller

Nancy Sukenik

Gifts \$500,000 to \$999,999

Elliot and Kay Cattarulla Estate of Kazuko Smith

Gifts \$100,000 to \$499,999

Gary and Ellen Davis The Hints Family

Richard W. Holt and Deborah Holt Weil

Estate of Ruth Lekan Susan Lynch

Gifts \$50,000 to \$99,999

Estate of Seymour R. Askin, Jr.

Deborah Goodman Davis and Gerry Davis

Joel and Sherry Mallin

Gifts \$25,000 to \$49,999

Maria Radoslovich Cox†

Ronni Lacroute

Dottie Litwin and Donald Brief

Donald McJunkin

Melissa Russell Rubel and Matthew Rubel

Beth and Stephen Treadway

Paul and Andrea Vizcarrondo

Gifts \$10,000 to \$24,999

Ellen G. Adelson and Stephen Adelson

John and Elaine Alexander

Stephen and Janice Ashley

Lisa and Richard Baker

Katie Bartels

Madeleine Bennett

Janet Bishop and Thad Povey

Rona Hollander Citrin and Jeffrey Citrin

Gabrielle Becker Cornick and Stephen Cornick

George and Sandra Garfunkel

Alan B. and Elizabeth H. Harris

Geoffrey Kalish and Michele Sherman-Kalish

Younghee Kim-Wait

Jeffrey Kuvin and Emily Mathes Kuvin

Jeffrey and Jill Libshutz

Robert Marcus

Nancy Meinig

Donald and Judith Opatrny

Joel and Joan Picket

Nancy and Nelson Schaenen, Jr.

Bruce and Sandra Steiner

Evan and Trisha Stewart

Gifts \$5,000 to \$9,999

Theodore Casper

Jodi and Andrew Dady

Marnie Gelfman

William Gratz and Jay Bruno

Gary and Marilyn Hellinger

Jeanne, Alan, and Julie Kanders

Alex Latella and Monica Choi

Yang Liu

Philip McCarthy and James Brodsky

Betty Ann Besch Solinger

Larry Tune

Margie and William Wang

Gifts \$1,000 to \$4,999

Anonymous friend

John and Genevieve Allen

Mark and Jeri Appel

Carol† and Ferdinand Avril

Ellen Avril

Nancy† and William M. Bellamy, Jr.

Laurie Berke-Weiss and Brian Berke

David and Kathleen Boochever

Barbara Altman Bruno and Joseph Bruno

James and Terry Byrnes

Thomas Carroll

Daniel Chen

Lewis Ka Hang Cheng

George Cohen

Robert and Vanne Cowie

Craig Dunton

Bob and Joyce Evans

Gretchen Dorfner Frank

Marilyn and Lawrence Friedland

Joseph C. Gatto, Jr.

Bradley and Mary Grainger

Daniel Greenberg

Donors of gifts-in-kind and donors to art acquisition funds for the year are listed on pages 24–25.

† deceased

Members and special gifts

Peter and Elke Greenberg	Daniel R. Schwarz and Marcia Jacobson	Margaret Crowley	Timothy O'Donnell
Andy Grundberg and Merry Foresta	Frances Shloss	Rosemarie Fajardo	Krešimir Penavić and Suzanne James Penavić
Gloria Guo	Peter and Ida Sue Starke	John and Francille Firebaugh	David Ross and Patricia Miller Ross
Rob Hale and Christine Oliver	Martha Steen	John Foote and Kristen Rupert	Jeff Rubin and Stephanie Wiles
Richard Johnson and Dale Reis Johnson	Peter Stifel	Michael and Jill Franco	Estate of Lottie Salton
Marcelle Joseph	Joseph Stregack and Marlene Taylor Stregack	Darel and Bette Franklin	Karen Sass
Mitchell Kase and Sara Lacy	Gail Harris Thomason and John Thomason	John and Ann Franzen	Anthony and Leslie Scattone
Frederick Korz	Michael and Debbie Troner	Laura Fratt and Michael Isby	Douglas Schwartz
Stephen Krauss	Albert Tsuei	Chloe Gatta	Paul and Terry Singer
Amy Jai-Sien Lai	Marcia Vose	Roslyn Bakst Goldman	Jeffrey and Gail Stone
Judith Lehr	Jay and Harriet Waks	Lynda Gould	William and Karen Tafuri
Jessica Levin Martinez	George and Michelle Weiner	Peter and Sarah Gould	Richard Talkin
Joan T. R. Macmillan	Mina Rieur Weiner	Bruce Graev	Li Tao and Jackson Lee
Margot Milberg	Malcolm Whyte	Meyer and Karen Gross	Natalie Teich
Roger Moak	Kenneth and Sharon Wilson	Bruce and Pauline Halpern	Fred and Susan Van Sickle
Charles and Carol Mund	Margot Zimmerman	Philip Handler†	Jean Voelcker
Nancy Neal		Cheryl Hannan	Helen and John Ward
Allen Newman	Gifts \$500 to \$999	Myra Maloney Hart and Kent Hewitt	Dorthea Crozier Warren and E. Terry Warren
Paula Noonan	Annetta Alexandridis	Matt Hints	Daniel Weidenthal
Roland Philip and Linda Sandhaus	Jerome and Enid Alpern	Department of History of Art faculty and staff	Donald C. Woo
Uwe and Inge Reichenbach	Helen and Paul Anbinder	Joan Holladay	Gifts \$250 to \$499
Carol Fein Ross, Sander Ross, and Hillary Ross Posternak	Alice Katz Berglas	Cara and Lawrence Iason	Louis and Gail Adler
David Russo and Mary Gearns	Peter and Judith Brandeis	James Irish and Andrea Glanz	Richard and Maryanne Banks
Eve Saltman	Jeff and Sandy Bricker	J. R. K. Kantor	Ronni Begleiter
Carolyn Sampson	Alice Brown	Peter and Joyce Klugherz	Susan Crego Bernholdt
Patricia Cristina Santiago	Courtney and Michael Campbell	Jonathan and Julie Kukk	Kenneth Best
Elias Savada	Francis Canale	Aric Lasher	Terri Binder
Matthew Schaab	Robert Geisler	J. Thomas Marchitto	William and Lois Black
Alan and Geraldine Schechter	Michael Cimini and Angela Cheng-Cimini	Wayne Merkelson and Nancy Roistacher	Victor Blas and Lauren Robinson Blas
Lisa Schenkel and J. Gregory Crandall	Laura Clark	Jerome and Barbara Nosanchuk	Ellen Breitman and Brien Amspoker
	Neil Coplan and Carolyn Levine Coplan	Leslie Jennis Obus and Michael Obus	
	Cornell Class of 1966		

† deceased

Members and special gifts

Joan and Frederick G. Buhrendorf, Jr. Edward and Nancy Butler Peter Chametzky and Susan Felleman David Cofrin and Christine Tryba-Cofrin Martha Coultrap and Harvey M. Bagg, Jr. Nicole D'Amato Frohman Davis Mike and Nancy Dickinson David and Peggy Dunlop Ronald and Randy Ehrenberg Burton and Brenda Fine John and Nancy Garland Sean Godbout Peter and Ruth Goodstein Richard and Barbara Grambow Nancy Green Olga Gutman Marc and Karen Harwitt Diana Heath C. David Himmelblau Leonard Johnson Jon Kleinberg and Lillian Lee Marjorie Klein Alise Kreditor and Jeffrey Englander Carroll and Jules Labarthe, Jr. Karen Lazan Joel and Nancy Malina Richard and Carol Marks Joe† and Nancy McAfee	Kerry McBroom Karl Miller and Roberta Tarbell Barbara Jacobs Mitnick Michele Landis Morisy Matthew Nowick and Peg Crowley-Nowick Harry and Jill Petchesky Jennifer Plichta Kira Pritchard Adam Ratner and Julie Zimmerman Sarah Ray Debbie Rothman James Sagalyn Dale Sang Carol Scheele Diane Shakin and Nicholas Klein David Shimkin Arnold Siegel and Susan Futterman David and Nancy Simpson Peter and Deborah Smith Ginger So and Ruben Chan Walter Swearingen Robert Sze Douglas Tabish Susan Triedman Yohko Tsuji Paul Tuller Christopher and Catherine Watkins Peter Wilson and Juliana Whitmore Fred and Mary Widding Lawrence Young and Jennifer Engel	Gifts \$100 to \$249 Jonathan Abrams and Elizabeth Linn Suzanne Aigen Suzanne Andrews Michael Baccoli Diane Baker Kaushik Basu Gerald Batt Carolyn and Steven Bell Mary Berens and Paul Feeny Bruce and Toni Berger Mary Berkelman and Maury Tigner Richard Blashka Victor Bochicchio Boynton Middle School Nancy Wu Brandon and Eugene M. Brandon, Jr. J. W. Bremer III Diana Briner Diane Butler Linda and Corydon Byard Lucie and Guy Franklin Campbell III Jeffrey Carowitz Maren and Matthew Caulfield Neil and Karin Chafetz Liz Des Cognets Champagne Cynthia Chase and Jonathan Culler Steven Chase Claudia Chiu Irene Christy Steven Chuey Michelle Cirillo Patricia Clark	Deborah Clawson Deborah Cluff Betty Cohen and Darren Leeds Lynford Collins Nathan Connell Matt and Lynne Conway David Crowley Daniel Villegas Cruz Stephen Cushman and Sandra Bain Cushman Daniel Dammann Diana Daniels Butch Darrow Jill Davies Rob de la Fuente and Jim Bouderau Christine Del Favero Don and Lynda Deprez Jamison Desantis Linda Jones Docherty Jean Winters Emery Elizabeth Emrich-Rouge Marshall Etra Gary and Vivian Fields Michael Fiorella David Fisher and Susan Birnbaum Fisher John M. Fisher, Jr. Donna Fleming Roland Sharpe Flores Jane Forni Peter Fortunato and Mary Gilliland Rolf and Nancy Frantz David and Karen Freedman Heidi Friederich
--	---	---	--

† *deceased*

Members and special gifts

William Ham and Kirsten Fudeman	Ruth Keene	Philip and Olga Marcasciano	Steve Riskin and Julie Lipsius
Victoria Xinhui Gao	Russell T. Kerby, Jr.	Alexandra Smith-Havens Marx	Gloria Roberts
Joshua Gibson and Tanya Egan Gibson	Lorne Kerr and Suzanne Blatt Kerr	Susan and James A. McCullough, Jr.	Frank and Margaret Robinson
Aaron and Amy Godert	Eric Kinder	Scott McGowan	Gemma Francisca Rodrigues
Tara Prince Goldman	Cathy Klimaszewski	Ann-Marie Meulendyke and Charles Vaughan	Robert Rombro and Lisa Stern
Craig and Elizabeth Gordon	Stephen Kline	Constance Ferris Meyer	Terry Rosen
Liz Gordon	Judith Komor	Richard Michelman	Andrew Rosenberg
Samuel and Judith Greenblatt	Alan Koslin	Elizabeth Gelfand Miller	Eric Rosenblum
Richard Greenfield	Michael Kotlikoff and Carolyn McDaniel	G. Robert Morris	Jennifer Rosenbluth-Stoll
Christopher and Hazel Gunn	Jan Krawitz	Robert and Mary Margaret Morse	Ira Ross
Peter Guterl	Diane Krukowski	Roberta Moudry	Jeffrey Rusten
Neal Haber and Suzanne Heller Haber	Edith Kubicek	Frances Myers	David and Jennifer Ryan
Carol Sue Hai	Leon and Muriel Kuhs	Kenneth Myers	Ahren and Barbara Sadoff
Christian Haller and Helen Downs Haller	James and Virginia Kunert	Alan Newhouse	Samuel Sage
Ronald and Sylvia Hartman	Rick Han Lam	Stuart and Carol Ockman	Takashi Sakazume
Lynne Henry	R. Carolyn Lange	Michael Olive	Samuel Salkin
Joe and Susan Hine	Claudia Lazzaro	Philip Orban and Amanda Freedman	Robert A. Sanders, Jr.
Mikey Hearne Hintsa	James and Audreylee Leavitt	William and Mary Palmer	Gilbert Schlerf
Chu-Ren Huang and Kathleen Ahrens	Aimee Lehmann	David Parr	Hannah Schockmel
Andrea Inselmann and Matthew Glaysher	Leonard and Mimi Levine	Robert Pavlenco	Heather Schroeder
Aron Izower and Tho Mai-Izower	Paul Levine	Catherine Perkins	Shannon Schroeder
Wendy Jennis	Ayanna Lewis-Gruss	Doris Perlmutter	Mason Scisco
Alfred R. Johnson, Jr.	Janet Lieberman	Ellen Perlmutter and Edward Jones	Vincent Shanley
Thomas E. Jones, Jr.	Elaine and Craig Little	Susan Pitzer	Harry Shaw and Judy Jensvold
Barbara Josepher	Beth Lobel	Annette Randall	Arthur and Charlotte Shull
Clara-Ann Joyce	Sari Locker	Julie Raskin	James Siena
Victor Wai Tak Kam	Christopher Loomis and Clarissa Plank	Joan Ratner	Brent Simon
Adria Goodkin Kaplan	Nelson Ma	Alyssa Reiner	Tobin Smith
Stephen and Judith Kaplan	Bernard MacCabe	Alison Relyea	Jonathan and Laura Soule
David Kapson	Stephen MacGuffie and Marci Schulson MacGuffie	Carlton Resnick	Matthew W. T. Spencer
	Peter and Tami Magnus	Carmen Reynolds	Seth Speyer and Linda Popejoy
	Bruce Mansdorf and Rebecca Sacks Mansdorf	Gail Ripans	Cara Starke

† *deceased*

Members and special gifts

Katherine Stifel	Memorial gifts	In memory of	In memory of
Susan Stone			Sheila and William Hearne,
Stephanie Sweda	In memory of Ian Alberta,	The Hinsta Family	Lila and Morton Savada,
Edward Swenson and	Matt and Lynne Conway		Elias Savada
Connie Hsu Swenson	In memory of William and	In memory of June W. Holt	In memory of Lila Savada,
Peter Taft	Isabel Berley, who enriched	and Leon C. Holt, Jr.,	Elias Savada
Sara Tam	the Johnson Museum	Richard W. Holt and	
Margaret Tockarshewsky	with their art collection,	Deborah Holt Weil	In memory of Winnifred and
Donald and Jill Treadwell	generosity, and enthusiasm,	In memory of Sylvia Jennis,	Herman Robert Schenkel, Jr.
Eric Treiber and	Daniel R. Schwarz and	Wendy Jennis	Lisa Schenkel and
Ruth Kaplan Treiber	Marcia Jacobson		J. Gregory Crandall
Olga Tsoudis and		In memory of Gordon Jones,	In memory of
Stephanos Antoniadis		Thomas E. Jones, Jr.	Kazuko and Robert Smith,
David Turner	In memory of James Boyle,		Yohko Tsuji
Terry Paul Vallery, Jr.	Lynne Henry	In memory of	In memory of Arthur Tasker,
Marjolein van der Meulen		Kelly Alice Middaugh,	Alexandra
Julie Walker	In memory of	Susan and	Smith-Havens Marx
Sarah Elliston Weiner	Richard Godbout,	James A. McCullough, Jr.	
Andrew and	Sean Godbout		In memory of
Nancy Weislogel		In memory of	Alan Robert Taxerman,
Matthew Weissman	In memory of Janet M. Crites,	Grace Moak Meisel,	Richard Vinegar and
Gordon Wenneker	Class of 1962,	Roger Moak	Sherrie Zweig
Margie Whiteleather	Helen and Paul Anbinder		
George and	Myra Maloney Hart and	In memory of	In memory of
Elizabeth Wiggans	Kent Hewitt	Martha Lawson Morse,	Yervant Terzian,
Gail Strand Wiley and	Stephen and Janice Ashley	Robert and	Philip Handler
William Wiley	Karin McNamara	Mary Margaret Morse	
Beth Willensky	Helen and John Ward		In memory of Kathy Tune,
Patricia Williams		In memory of Irfan Munir,	Larry Tune
Patricia Steele Wilson	In memory of	Shafay Munir	
Phyllis Corcoran Woods	Dee Donaldson Emrich,		In memory of
H. Robert and	Elizabeth Emrich-Rouge	In memory of	Mrs. Chang Yun Chiu Wang,
Marcia Yeager		Paul and Betty Noonan,	Jean Winters Emery
	In memory of	Paula Noonan	
	Marciano and Teresa Flores,		In memory of Yulin Wang,
	Roland Sharpe Flores	In memory of a pet,	Jeffrey Ouyang
		Karann Putrevu	
	In memory of		In memory of
	Maddy Gell Handler,	In memory of	Judith Weinberg Weidenthal,
	Philip Handler	Kathleen Putnam,	Daniel Weidenthal
		George and	
	In memory of	Elizabeth Wiggans	In memory of Alice Young,
	Ritalou Rogow Harris and		Ellen Avril
	Robert O. Harris,	In memory of	
	Gail Harris Thomason and	Leonard Murray Roberts,	In memory of
	John Thomason	Gloria Roberts	Paul Zimmerman,
			Margot Zimmerman
		In memory of Jan Rothman,	
		Debbie Rothman	

† *deceased*

Members and special gifts

Tribute gifts

In honor of Ellen Avril,
Karen Sass

In honor of Dorian Batt,
Gerald Batt

In honor of
Cornell Class of 1996,
Dan Dovdavany

In honor of Donna Godbout,
Sean Godbout

In honor of Nancy Green,
Susette Newberry

In honor of Abraham Hyet,
Syed Hyet

In honor of
Cathy Klimaszewski,
Christine Del Favero

In honor of
Patricia Pavlenco,
Robert Pavlenco

In honor of Phil Miller III,
Gregory O'Shea

In honor of
Patricia M. Stewart,
Evan Stewart

In honor of Ryan Zucker,
Beth Lobel

The Cayuga Society

Anonymous donors
Laura and John Almquist
Helen and Paul Anbinder
William Bellamy
Madeleine Miller Bennett
Fred Brustman
Elliot and Kay Cattarulla
Kathleen Cavanaugh
Martha Eustis
Melinda Everitt
Edward A. Fox
Jeffrey I. Frey
Peter Galderisi
Bradley and Mary Grainger
Hazel Dayton Gunn
Alan B. and Elizabeth H. Harris
David S. Hogle
J. R. K. Kantor
Elizabeth Horowitz Lea
Paul Burton Levine
Virginia and Jon Lindseth
Dorothy Litwin
Robert L. Marcus
Joseph F. Martino, Jr.
Caryl and Stratton McAllister
Joseph M. Ostrow
Roland S. Philip
Margaret and Frank Robinson
Daniel R. Schwarz and
Marcia Jacobson
Eunice Shatzman
Betty Ann Besch Solinger
Irene Lazarus Soskin
Patricia and James D. Stocker
Lee and Paul Tregurtha
Phyllis Tuddenham
Joyce W. Underberg
William C. Wells
Sally Williams
Margot Lurie Zimmerman

The Cayuga Society honors those who have made planned gifts to the Museum.

For information on making a planned gift and becoming a Cornell Cayuga Society Member, or in the event that your planned gift intentions have changed, please contact Courtney Campbell, Director of Development, at ccn44@cornell.edu.

† *deceased*

Named endowment funds

The following individuals, families, and organizations are acknowledged for their named endowment funds that provide an ongoing source of income for the Johnson's operation, staff, exhibitions, collection, and programs.

Anonymous	Gale and Ira Drukier Endowment
Professor and Mrs. M. H. Abrams Purchase Fund	Nancy and Stephen Einhorn Internship
Jan Abrams Exhibition Endowment	Truman W. Eustis III Print Endowment
Harriet Ames Exhibition Endowment	Findlay Family Lecture in American Art
Associate Director and Harriet Ames Charitable Trust Curator of Education	Ruth Parcels Foote Fund
Steven Ames Challenge Exhibition Endowment	Elizabeth Miller Francis Fund
Steven Ames Mellon Endowment	Marilyn and Lawrence Friedland Art Acquisition Fund
Robert J. Appel Exhibition Endowment	Meyer A. and Karen Charal Gross Internship
Art Acquisition Endowment	Alan and Betsey Harris Exhibition Endowment
Seymour R. Askin, Jr., Curatorship for Earlier European and American Art	Professor John A. Hartell Internship
Nancy Horton Bartels Endowment for Art Acquisitions	Hartell-Cattarulla Endowment for Exhibitions
William and Isabel Berley Director's Discretionary Fund	June W. Holt '47 and Leon C. Holt, Jr. Education Endowment
John Burriss Art Acquisition Endowment	June W. Holt '47 and Leon C. Holt, Jr. Endowed Internship
Cattarulla-Hartell Contemporary Art Acquisition Fund	Kenneth and Jill Iscol Art Purchase Endowment
Alison C. Cheng Internship in Photography	Johnson Museum Fund
Maria R. Cox and Donald M. Cox Museum Director's Discretionary Fund	Johnson General Operating Endowment
Maria R. Cox and Donald M. Cox Exhibition Endowment	Johnson Museum Campaign Endowment
Gary and Ellen Davis Curator of Photography	H. F. Johnson Acquisition Endowment
Deborah Goodman Davis and Gerald R. Davis Fund for the Acquisition of Works on Paper	Ralph and Jeanne Kanders Museum Library Endowment
Dobson Asian Department Endowment	Lee C. Lee Endowment for East Asian Art
Muriel Dreiling Asian Art Internship	Lee C. Lee Asian Art Education
Jennifer, Gale, and Ira Drukier Fund for Art Acquisitions	Litwin Omni Endowment
Gale and Ira Drukier Curatorship of European and American Art, Prints & Drawings, 1800-1945	Lurcy Lecture Endowment
	Lynch Coordinator for Academic Programs
	Sherry Vogel Mallin and Joel Mallin Museum Director's Discretionary Fund
	Joel and Shery Mallin Endowment
	Grace Moak Meisel Memorial Endowment

Named endowment funds

The following individuals, families, and organizations are acknowledged for their named endowment funds that provide an ongoing source of income for the Johnson's operation, staff, exhibitions, collection, and programs.

Mellon Foundation Matching Grant

Evalyn Edwards Milman '60 & Stephen E. Milman '58
Fund for the Museum's K-12 Education Program

Evalyn Edwards Milman '60 & Stephen E. Milman '58
Acquisition Fund

Rebecca and James Morgan Garden Fund

Museum Exhibition Endowment

Museum Education Program Fund

Museum Artist-in-Residence Endowment

National Endowment for the Arts Endowment

National Endowment for Humanities

New Wing Operations Endowment

New York State Council on the Arts

Warner L. Overton Endowments

Dorothy D. Park Estate

Joel and Joan Picket National Endowment for
the Arts Exhibition Endowment

Frank and Margaret Robinson Prints, Drawings,
and Photographs Endowment

Rockwell Art Acquisition Endowment

George and Mary Rockwell Endowments

Richard J. Schwartz Directorship

Richard J. Schwartz Exhibition Endowment

Clara Seley Estate

Robert and Kazuko Smith Purchase Endowment

David M. Solinger Endowment

Louise C. Stetter Endowment

Judith H. Stoikov Curator of Asian Art

Dr. Judith Stoikov Lecture Series in Asian Art

Richard Sukenik '59 Fund for Photography

Tanner Family Purchase Fund

Treadway Museum Collection Fund

Margaret H. and Charles E. Treman, Jr.
Acquisition Fund

Genevieve M. Tucker Art and Education Internship

William J. and Phyllis Stapley Tuddenham Fund

Jarett F. and Younghee Kim-Wait Fund for
Contemporary Islamic and Middle Eastern Arts

Jarett F. and Younghee Kim-Wait Fund for
Korean Arts

A. D. White Director's Discretionary Fund

Ernest I. White Endowment

Stephanie L. Wiles Acquisition Fund

Annie Wong and Calvin Cheng Internship for
Chinese Art

Martie Young Asian Art Internship

HERBERT F. JOHNSON MUSEUM OF ART

COVER

Paul Pfeiffer: Morning After the Deluge at the Johnson Museum, February 2021

Photo: Robert Barker

PHOTOGRAPHY

David O. Brown/Johnson Museum

Lindsay France/Cornell University (page 12)

Bill Staffeld/Cornell AAP (page 16)

Herbert F. Johnson Museum of Art
Cornell University
114 Central Avenue
Ithaca, NY 14853
607-255-6464
museum.cornell.edu

Diversity and inclusion are a part of Cornell University's heritage. We're an employer and educator recognized for valuing AA/EEO, Protected Veterans, and Individuals with Disabilities.

© 2024 Cornell University

The Johnson Museum is grateful to the New York State Council on the Arts for general operating support.



Educator Carol Hockett walks like Giacometti's *Walking Man* for a pre-K class at Ithaca's South Hill Elementary, May 2021 (see page 19).
